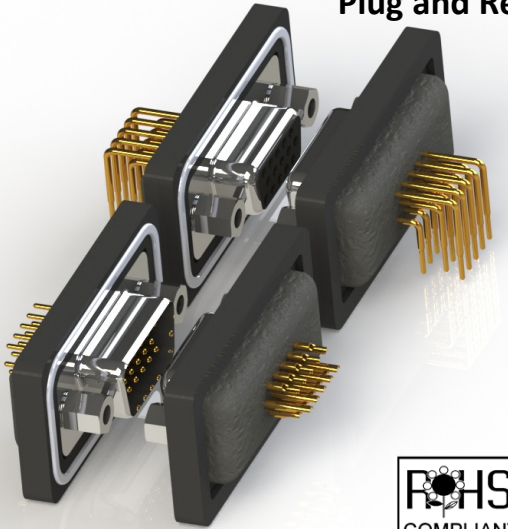




SERIES 633/634/637/638 WATERPROOF HD D-SUB



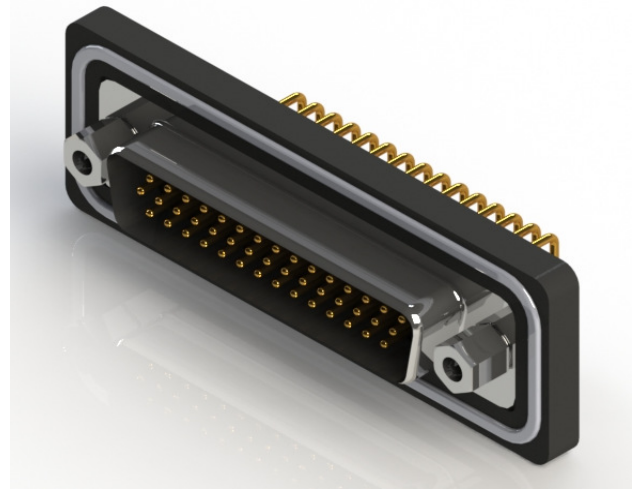
Plug and Receptacle , Straight or Right Angle PCB Mount



- High Density Waterproof D-Sub
- .090"(2.29mm) Contact Spacing x .078"(1.98mm) Row Spacing
- Plug and Receptacle in 15, 26 or 44 Contact Pin Sizes
- Pin Contact Mating Design with P.C. Tail Termination in Right Angle, Straight or Solder Cup Termination
- Plug Shell Indents Provide Grounding and Additional Mating Retention
- Grounding Feature include Two Prong Boardlock for Exceptional Retention to P.C. Board
- Mounting Options for Panel Mount or Connector Mating include Threaded Inserts or Threaded Standoffs
- D-Shaped Connector Mating Outline provides Polarization
- Degree of Protection: IP67 as per IEC60529

Specifications:

| | |
|-----------------------|--|
| Insulator Material | PBT Thermoplastic with 30% Glass Filled, UL 94V-0 Rated, Black color |
| Contact Material | Pins and Sockets: Copper Alloy |
| Contact Plating | Gold Plating over Nickel underplating |
| Shell Material | Nickel Plated Steel |
| Epoxy Sealant | Epoxy |
| O-Ring | Silicone |
| Current Rating | 3A Per Contact |
| Contact Resistance | 10 Milliohms MAX |
| Insulation Resistance | 5000 Megohms MIN |
| Dielectric Voltage | 1000V AC rms at Sea Level |
| Operating Temp. | -25°C To +85°C |



Ordering Code:

633-W15-221-012

| | |
|--|--|
| <p>SERIES: PLUG, Right Angle, 9.7 [0.383], High Density Size 633 Receptacle, Right Angle, 9.7 [0.383], High Density Size 634 PLUG, Vertical PCB Mount, High Density Size 637 Receptacle, Vertical PCB Mount, High Density Size 638</p> <p>CROSS / REF: EDAC CODE WATERPROOF W</p> <p>NO. OF CONTACTS: 15 CONTACT PINS 15 26 CONTACT PINS 26 44 CONTACT PINS 44</p> <p>CONTACT PLATING Gold Flash Plating over Nickel 2 15 μIN of Gold Plating over Nickel 3 30 μIN of Gold Plating over Nickel 6</p> | <p>MOUNTING OPTION: 2 #4-40 UNC THREADED HOLE</p> <p>NOTE: ALL CONNECTORS ARE SHIPPED WITH #4-40 UNC HEXAGON SCREWS (Packed Separately)</p> <p>SHELL OPTIONS: 1 NICKEL PLATED</p> <p>INSULATOR COLOR: 0 BLACK</p> <p>CONTACT CODE: 21 PC TAIL FOR HIGH DENSITY TYPE D-SUB 22 SOLDER CUP TERMINATION 62 RIGHT ANGLE TAIL FOR HIGH DENSITY TYPE D-SUB</p> |
|--|--|