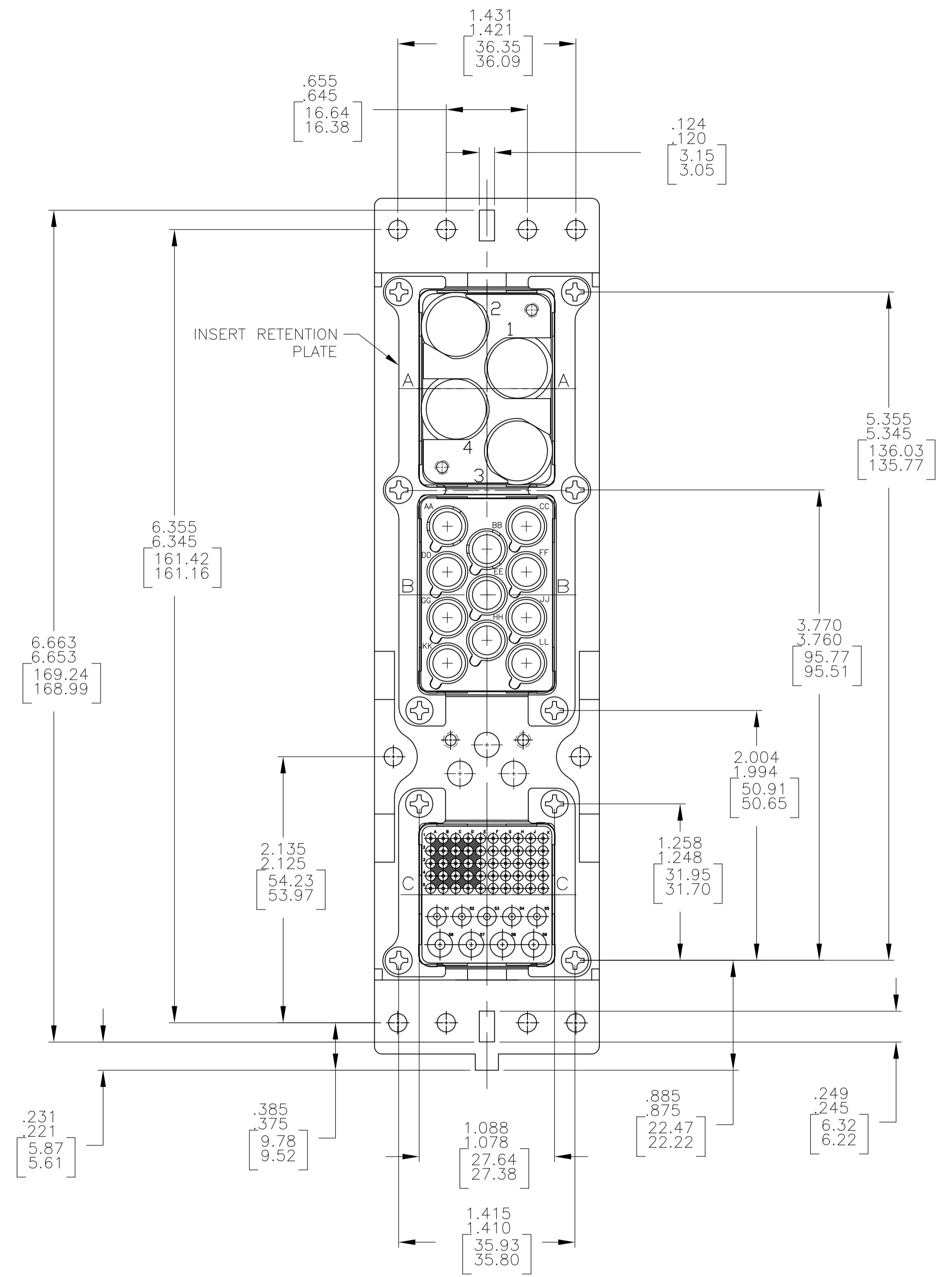
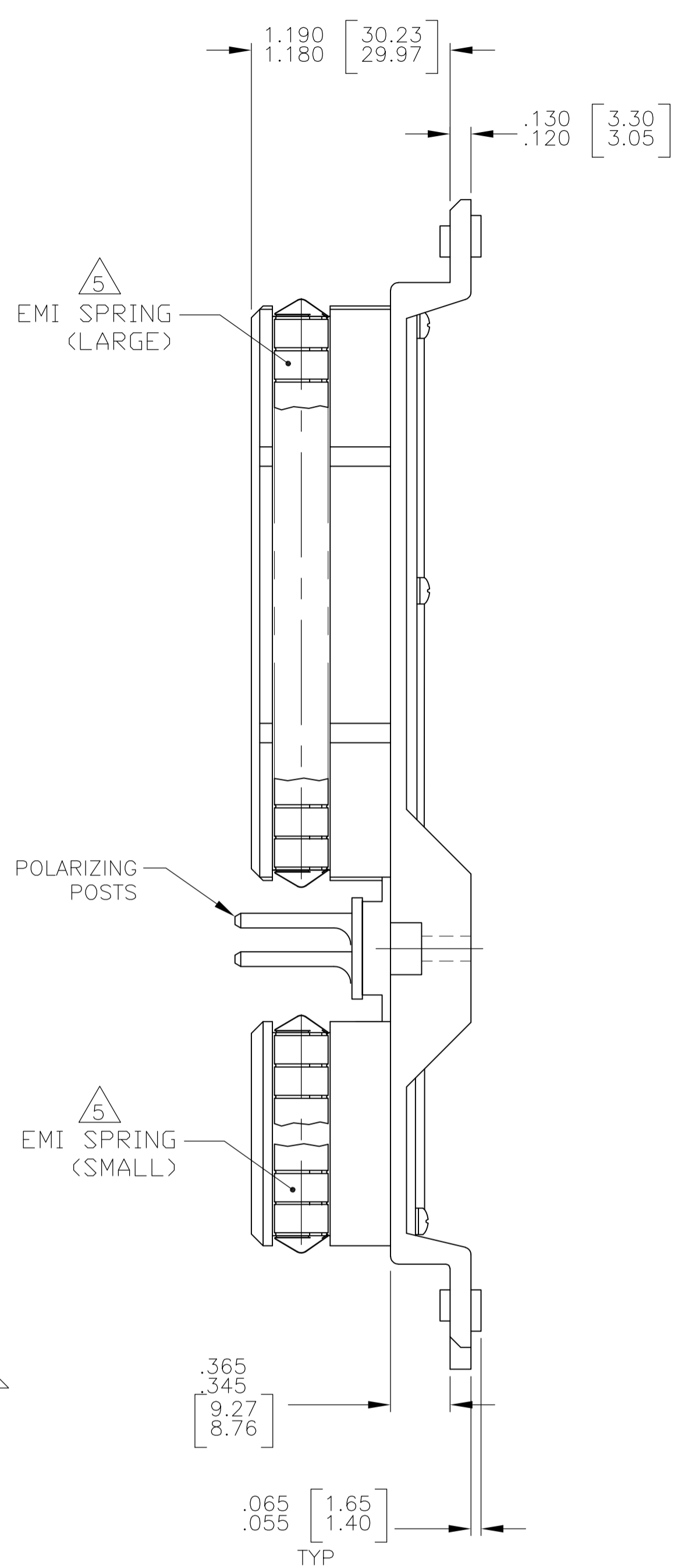
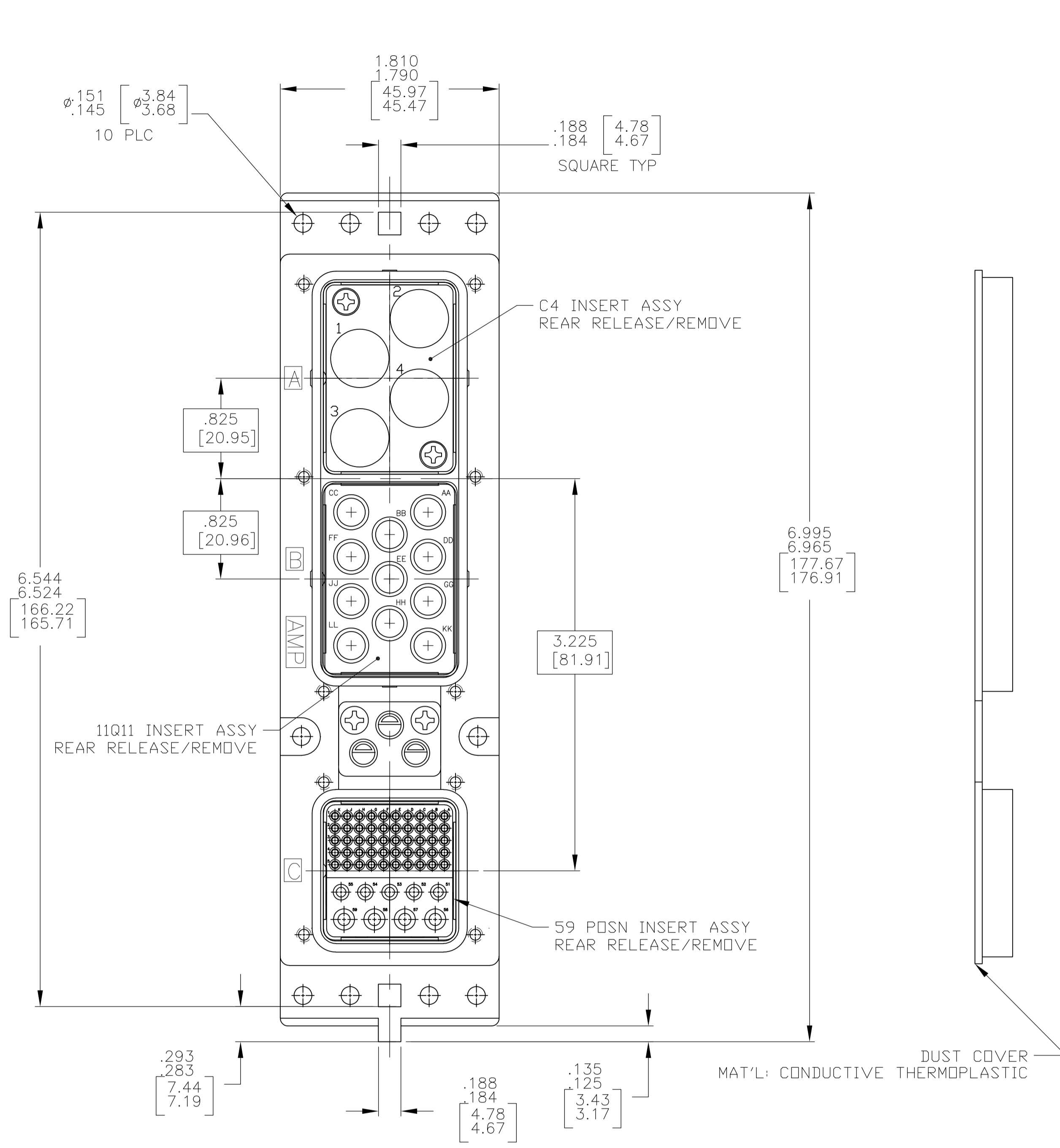


REVISONS		DATE	DN	APVD
LOC	DIST			
H	REV PER ECO	14-002686	2-25-14	CT WB



- CONNECTOR DIMENSIONS ARE PER ARINC 600 SPECIFICATION UNLESS OTHERWISE SPECIFIED.
 - DUST COVER INSTALLED FOR SHIPPING.
 - KEYING SHOWN IN POSITION "01" FOR ILLUSTRATION ONLY. CONNECTORS SHIPPED WITH KEYING INSTALLED IN POSITION PER TABLE.
 - CONTACTS AND FILLER PLUGS SHIPPED IN A SEPARATE CONTAINER WITH CONNECTOR.
- 5 GROUND SPRINGS ARE SOLDERED TO THE SHELL. 2 PLC

COMPONENT	MATERIAL	FINISH
SHELL	DIE CAST ALUMINUM PER ASTM-B-85	ELECTROLESS NICKEL PER MIL-C-26074
INSERT RETENTION PLATES	ALUMINUM ALLOY PER ASTM-B-209	ELECTROLESS NICKEL PER MIL-C-26074
SCREWS AND LOCKWASHERS	STEEL OR STAINLESS STEEL	CHROMATE OVER ZINC OR PASSIVATED
POLARIZING POSTS	ALUMINUM ALLOY PER ASTM-B-209	BLUE ANODIZED PER MIL-A-8625
POLARIZING POST RETAINING PLATE	ALUMINUM ALLOY PER ASTM-B-209	BLUE ANODIZED PER MIL-A-8625
59 POSN. INSERT	THERMOSET OR THERMOPLASTIC PPS PER MIL-M-24519	-
11Q11 INSERT	ALUMINUM ALLOY PER ASTM-B-209	ELECTROLESS NICKEL PER MIL-C-26074
C4 INSERT	ALUMINUM ALLOY PER ASTM-B-209	CHEMICAL CONVERSION PER MIL-C-5541, CLASS 1A
GROUND SPRINGS	BERYLLIUM COPPER	ELECTROLESS NICKEL PER MIL-C-26074

"09"	MODULE A: NO CONTACTS OR FILLER PLUGS MODULE B: PART NO. 1445693-1 (SZ 8 QUADRAX; QTY = 7) NO FILLER PLUGS OR CONTACTS INCLUDED FOR AA & CC MODULE C: PART NO. 208262-3 (SZ 22 PIN CONTACT QTY = 12) PART NO. 208270-2 (SZ 16 SOCKET CONTACT QTY = 4)	1996092-1
	KEYING POSITION	CONTACTS & FILLER PLUGS INCLUDED NOT INSTALLED

THIS DRAWING IS A CONTROLLED DOCUMENT.		DIN C.C.THOMAS 10-3-07	TE Connectivity
DIMENSIONS: INCHES	TOLERANCES UNLESS OTHERWISE SPECIFIED:	10-3-07	
	0 PLC ± - 1 PLC ± - 2 PLC ± - 3 PLC ± - 4 PLC ± - ANGLES ± -	APVD K.THACKSTON 10-3-07	NAME K.THACKSTON
MATERIAL SEE CALLOUTS	FINISH SEE CALLOUTS	WEIGHT -	APPLICATION SPEC -
CUSTOMER DRAWING		SCALE 1:1	SHEET 1 OF 1