

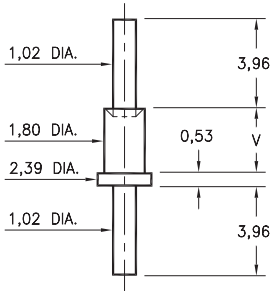
MALE PCB PINS

SOLDER TERMINALS PIN TYPE

2319

2319-X-00-XX-00-00-07-0

Swage mount in 1,93 hole

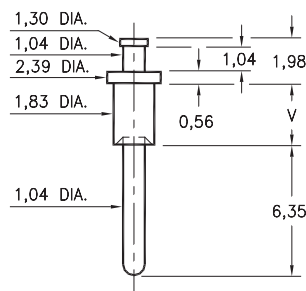


Basic Part Number	Board Thickness	Length V
2319-1	0,79	1,30
2319-2	1,57	2,08
2319-3	2,39	2,87

2313

2313-X-00-XX-00-00-07-0

Swage mount in 1,93 hole

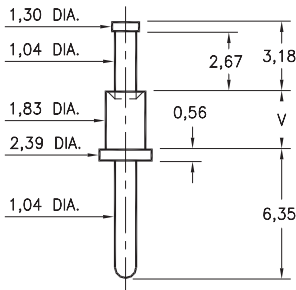


Basic Part Number	Board Thickness	Length V
2313-1	0,79	1,30
2313-2	1,57	2,13
2313-3	2,39	2,87
2313-4	3,18	3,68

2321

2321-X-00-XX-00-00-07-0

Swage mount in 1,93 hole

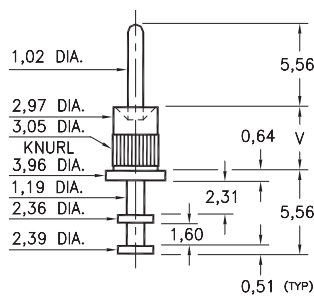


Basic Part Number	Board Thickness	Length V
2321-1	0,79	1,30
2321-2	1,57	2,08
2321-3	2,39	2,87
2321-4	3,18	3,68

2706

2706-X-00-XX-00-00-07-0

Swage mount in 3,05 hole

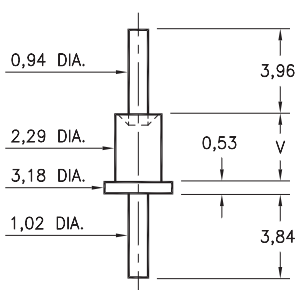


Basic Part Number	Board Thickness	Length V
2706-1	0,79	1,60
2706-2	1,57	2,36
2706-3	2,39	3,18
2706-4	3,18	3,96

2530

2530-X-00-XX-00-00-07-0

Swage mount in 2,39 hole

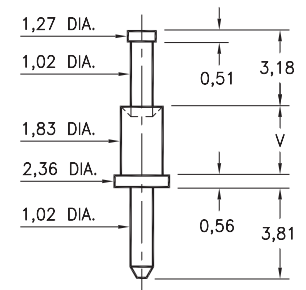


Basic Part Number	Board Thickness	Length V
2530-2	1,57	2,39
2530-3	2,39	3,18
2530-4	3,18	3,96

3156

3156-X-00-XX-00-00-08-0

Swage mount in 1,93 hole



Basic Part Number	Board Thickness	Length V
3156-1	0,79	1,30
3156-2	1,57	2,08
3156-3	2,39	2,87
3156-4	3,18	3,68

SPECIFICATIONS:

Pin Material: Brass Alloy 360, 1/2 Hard
(Swage pins are annealed)

Dimensions: Millimeters

Tolerances On: Lengths: $\pm 0,13$
Diameters: $\pm 0,051$
Angles: $\pm 2^\circ$



ORDER CODE: XXXX - X - 00 - XX - 00 - 00 - XX - 0

BASIC PART #

SPECIFY PIN FINISH:

- 01 5,08 μ m TIN/LEAD OVER NICKEL
- ◆ 80 5,08 μ m TIN OVER NICKEL (RoHS)
- ◆ 44 7,62 μ m SILVER OVER COPPER (RoHS)
- 50 7,62 μ m ELECTRO-SOLDER
(60/40 SnPb)

