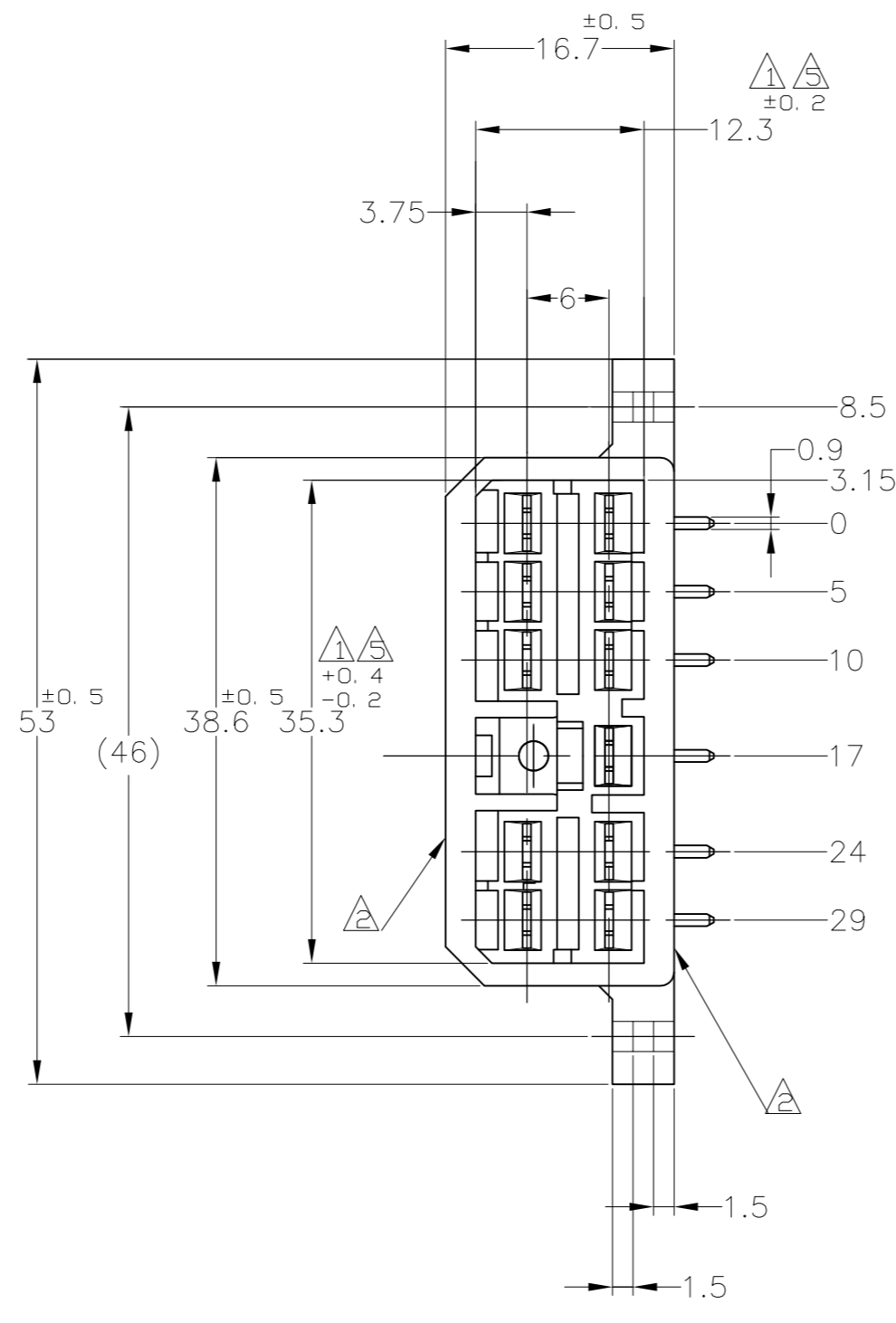
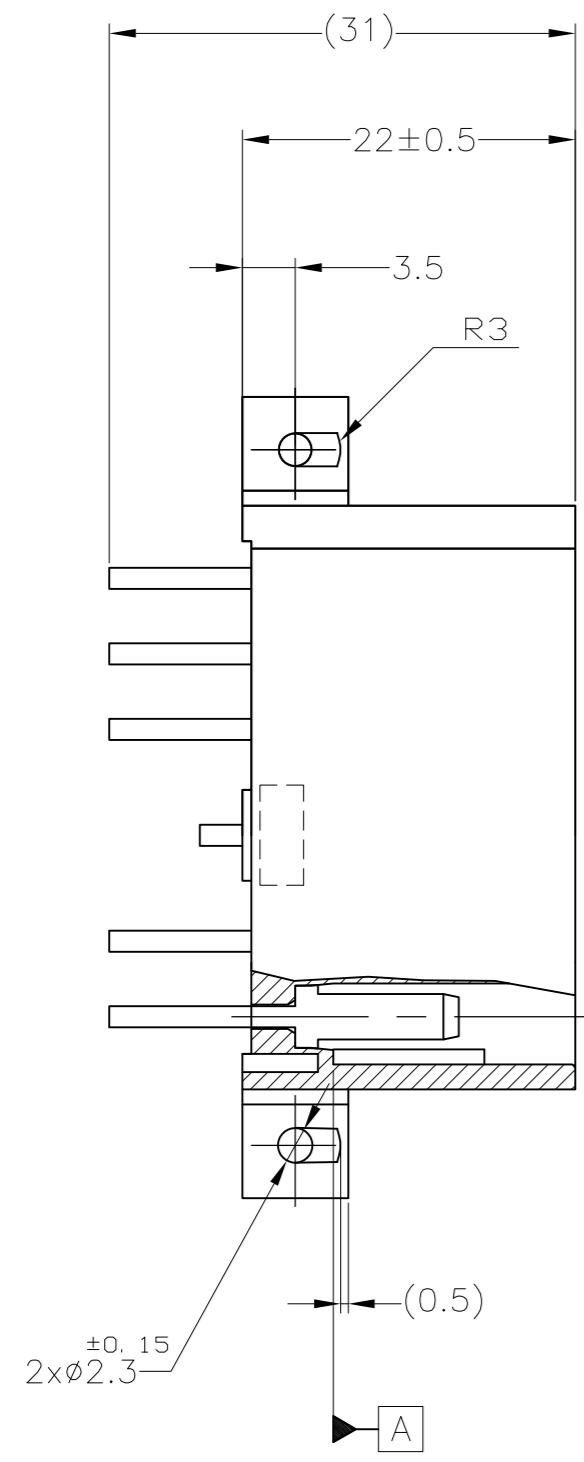


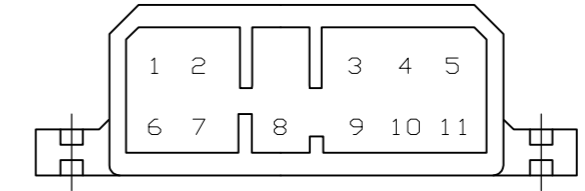
THIS DRAWING IS UNPUBLISHED. RELEASED FOR PUBLICATION
 © COPYRIGHT 2016 By Tyco Electronics Japan G.K. ALL RIGHTS RESERVED.

REVISIONS				
P	LTR	DESCRIPTION	DATE	APVD
G4	OBSOLETE2--1	ECR-16-003014	16AUG16	KF HY



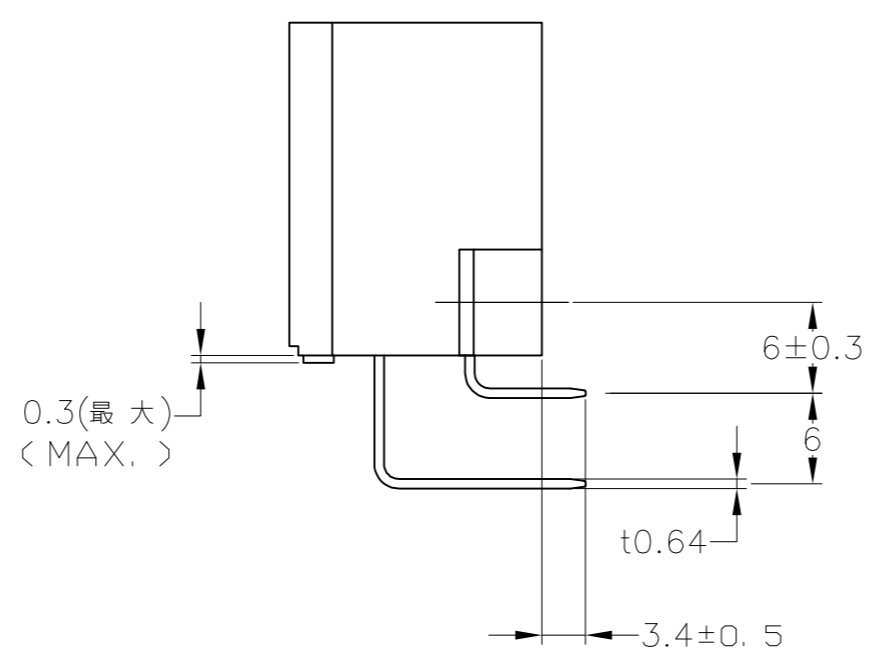
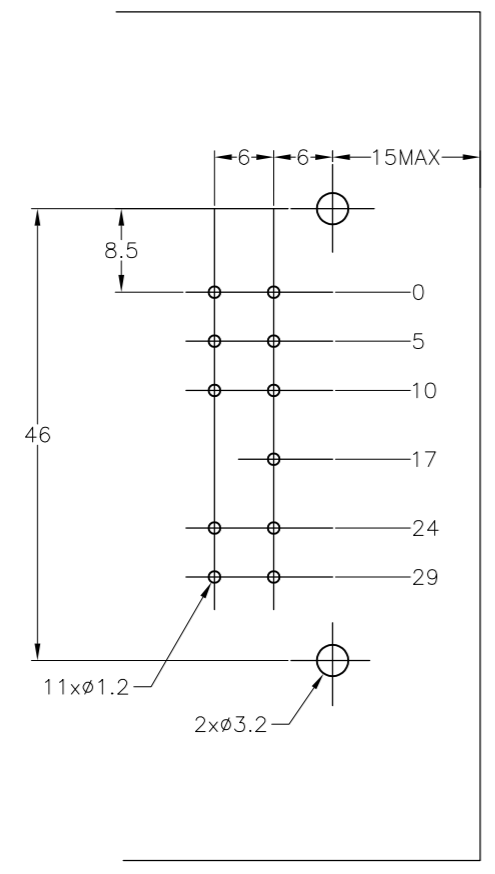
- 注記:
- 1 相手ハウジングと所定の機能を満たして嵌合できること。
 - 2 フードの反りは0.2以内。
 - 3 プリント基板への取付けは JIS B1115 M3 種のタッピンネジで締め付けた後はんだ付けする。
 - 4 適用製品規格; 108-5093
 - 5 [A] 面より2mmの範囲で測定のこと。
 - 6 相手ハウジングとの嵌合力は、29.4N以下
但し、リセプタクルコンタクトは含まない。
- △ 金めっき位置番号: 下図参照のこと。

- NOTE:
- △ IN COUPLING WITH THE PLUG HOUSING MATING SATISFIES FUNCTION
 - △ WARPAGE 0.2 MAX.
 - 3 SOLDERING AFTER MOUNTING P.C.BOARD BY 3mmDIA TAPPING SCREW, SPECIFIED IN JIS B1115
 - 4 PRODUCT SPEC NO.108-5093
 - 5 TO BE MEASURED WITHIN 2mm FROM [A]
 - 6 IN COUPLING WITH THE PLUG HOUSING MATING FORCE 29.4N MAX. WITHOUT RECEPTACLE CONTACT
 - △ GOLD PLATED POSITION NUMBER.



プリント基板取付寸法図
(MOUNTING DIMENSIONS FOR P.C.BOARD)

1. 板厚, 1.6±0.15
(P.C.B. THICKNESS, 1.6±0.15)
2. 公差, ±0.1
(TOLERANCE, ±0.1)



	1~11	SELECTIVE-TIN (MATTE)	SELECTIVE GOLD (0.38μm MIN.)	NATURAL	2-5172038-1
OBSOLETE	6~11	TIN-LEAD	SELECTIVE GOLD (0.38μm MIN.)	YELLOW	3-172038-7
		PRE-TIN			
OBSOLETE	1~11	TIN-LEAD	SELECTIVE GOLD (0.38μm MIN.)	GREEN	2-172038-4
OBSOLETE	1~11	TIN-LEAD	SELECTIVE GOLD (0.38μm MIN.)	NATURAL	2-172038-1
OBSOLETE	1~11	TIN-LEAD	SELECTIVE GOLD (0.76μm MIN.)	GREEN	1-172038-4
OBSOLETE	1~11	TIN-LEAD	SELECTIVE GOLD (0.76μm MIN.)	NATURAL	1-172038-1
OBSOLETE		PRE-TIN		YELLOW	172038-7
OBSOLETE		PRE-TIN		GRAY	172038-6
OBSOLETE		PRE-TIN		BLUE	172038-5
OBSOLETE		PRE-TIN		GREEN	172038-4
OBSOLETE		PRE-TIN		BROWN	172038-3
OBSOLETE		PRE-TIN		BLACK	172038-2
OBSOLETE		PRE-TIN		NATURAL	172038-1
	GOLD PL. POSITION No. 金めっき位置番号	SOLDERING SIDE 半田付け部	CONTACT SIDE 接触部側	COLOR 色	PART NUMBER 製品型番
		CONTACT FINISH コンタクト仕上			

TOLERANCE UNLESS OTHERWISE SPECIFIED:
 一般公差
 0 <= X <= 10 : ±0.2
 10 <= X <= 30 : ±0.25
 30 <= X <= 100 : ±0.3
 ANGLE : ±3°

THIS DRAWING IS A CONTROLLED DOCUMENT.

DIMENSIONS: 単位: 寸 mm

TOLERANCES UNLESS OTHERWISE SPECIFIED: 一般公差

MATERIAL: HSG: 66 NYLON CONTACT: BRASS

FINISH: 仕上

SEE TABLE

DWN: T.SHINOHARA 31AUG07
 CHK: K.BETSUI 31AUG07
 APVD: K.BETSUI 31AUG07

PRODUCT SPEC: 製品規格
 APPLICATION SPEC: 取付適用規格

SEE NOTE 4

TE Connectivity

11P HORIZONTAL TYPE CAP HOUSING MULTI-INTERLOCK CONN. WIRE TO PCB

SIZE: A2 CAGE CODE: 00779 DRAWING NO: 172038

WEIGHT: 10.6 g

CUSTOMER DRAWING

SCALE: 2:1 SHEET: 1 OF 1 REV: G4