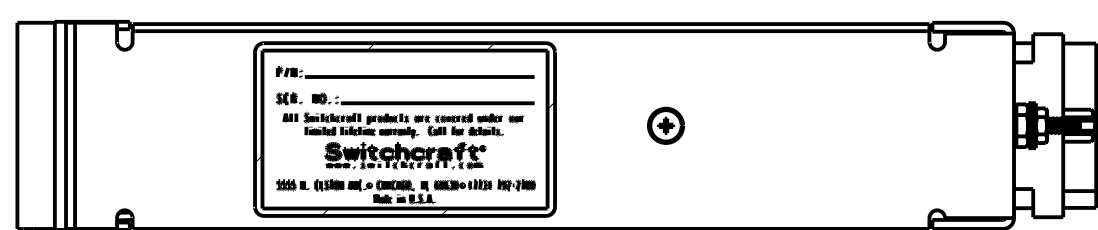
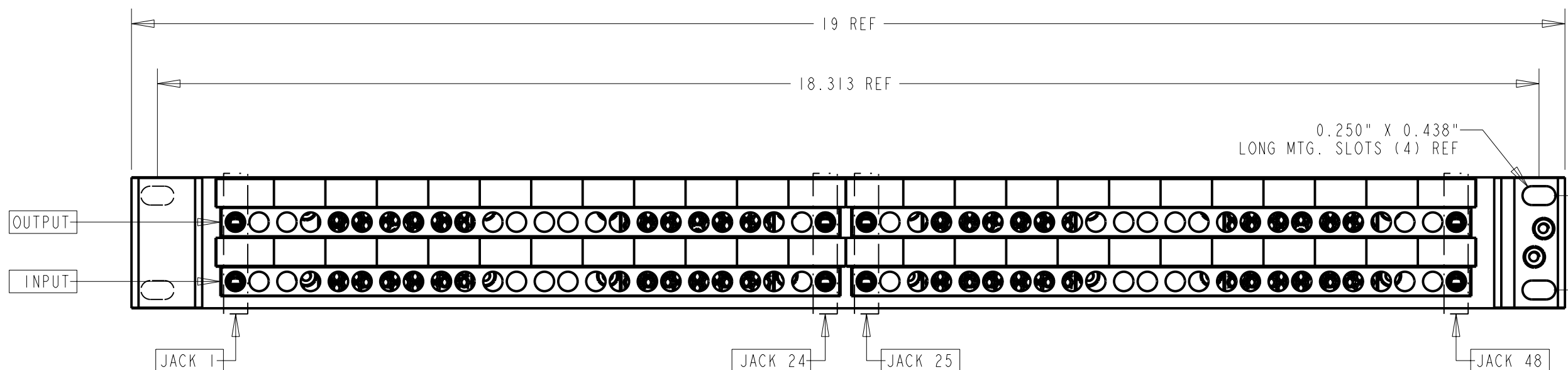


WIRING CONFIGURATION
WIRING VIEW
(NORMALS BROUGHT OUT)



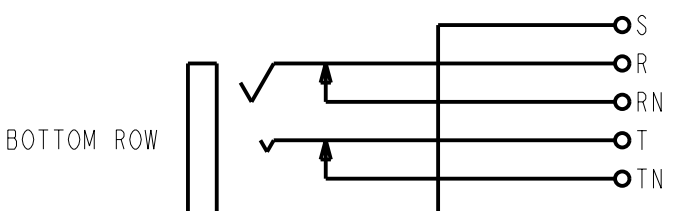
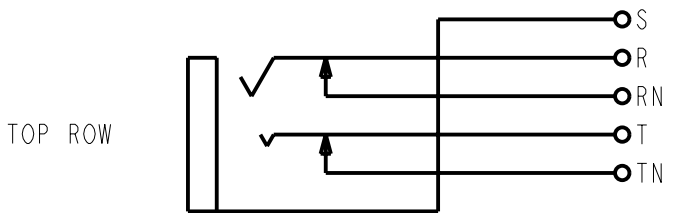
120 PIN CONNECTOR PIN-OUT					
JACK No.	TIP	RING	SLEEVE	TIP SHUNT	RING SHUNT
1	A	B	C	D	E
JACKS #2 THRU #6 PATTERN CONTINUES TO AN, AM, AL, AK, AJ					
7	AH	AF	AE	AD	AP
JACKS #8 THRU #12 PATTERN CONTINUES TO BN, BP, BW, BV, BU					
13	BT	BS	BR	BX	BY
JACKS #14 THRU #18 PATTERN CONTINUES TO CX, DH, DF, DE, DD					
19	DC	DB	DA	CZ	CY
JACKS #20 THRU #24 PATTERN CONTINUES TO EF, EH, EJ, EK, EL					



MATERIAL:
JACKS
 Frame: Nickel-plated steel
 Bushing: Nickel-plated Brass
 Tip, Ring and Shunt Springs: Nickel-silver with welded contacts
 Assembly Screws: Zinc plated steel
 Welded Contacts: Gold alloy

PANEL
 Front Channel: Black anodized aluminum
 Frame & Cover: C.R.S. black epoxy painted
 Designation Strips: Black Polycarbonate, 94V-0
 Designation Strip Covers: Clear Polycarbonate
 Jack Inserts: Polyester

EDAC CONNECTOR
 Housing: Thermoplastic, UL94V-0 (part no's: 516-120-000-202)
 Contacts: Gold plated Phosphor Bronze



JACK SCHEMATIC

NOTE:
 WIRING STARTS AT "A" ON CONNECTOR AND WINDS UP AND DOWN CONTINUOUSLY THROUGHOUT CONNECTOR.

REV	ECO NUMBER	DATE	BY	APVD
E	23184	5-10-00	JL	EB
D	22558	1-21-99	JL	JF
C	22477	8-5-98	SG	ELB
B	22108	1-21-98	RC	JF
A	REL. TO PROD. ECO #21942	8-22-97	SG	SC

★ STAR SYMBOL DENOTES CRITICAL DIMENSION
 UNLESS OTHERWISE SPECIFIED
 1. ALL DIMENSIONS IN INCHES
 - TWO PLACE DECIMALS ±0.01
 - THREE PLACE DECIMALS ±0.005
 - ANGLES ±1°
 - ALL DIA. CONCENTRIC WITHIN 0.005 T.I.R.
 2. FEATURES ON THE SAME CENTERLINE MUST BE ALIGNED WITHIN ±0.002
 3. REMOVE ALL BURRS

THIS DRAWING DESCRIBES A DESIGN CONSIDERED PROPRIETARY IN NATURE, DEVELOPED AND MANUFACTURED BY SWITCHCRAFT INC. AND IS RELEASED ON A CONFIDENTIAL BASIS FOR IDENTIFICATION PURPOSES ONLY.				
SIZE	WIDTH	MULT	LBS/M	TEMPER
FINISH		MATERIAL SPEC No.		
FIRST USED ON		SCALE 5:8		
DATE DRAWN	BY	CHKD	APVD	Switchcraft
5-23-97	SG	5-23-97	JF	
NAME JACKFIELD				SHEET 1 OF 1
PART No. TT96EDACNO				REV E

CUSTOMER DRAWING